



RAPID

THE CHANGE WE SEEK

ADAMAWA STATE Nigeria

OVERVIEW

- ▣ If women in Adamawa continue to have nearly six children each, the state's population could become three times larger by 2050.
- ▣ Nearly half of Adamawa's people are under age 15. If contraceptive use remains low, population growth could rapidly accelerate, further challenging the state's development.
- ▣ Increasing women's use of family planning between 2014 and 2050 would lead to healthier families and reduced stress on Adamawa's systems and resources.



ADAMAWA STATE GOVERNMENT



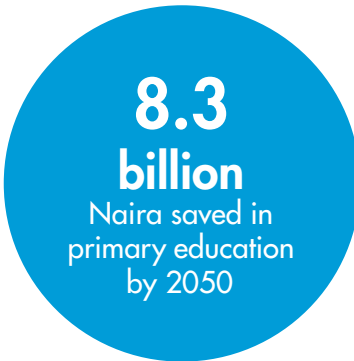
NATIONAL POPULATION
COMMISSION OF NIGERIA



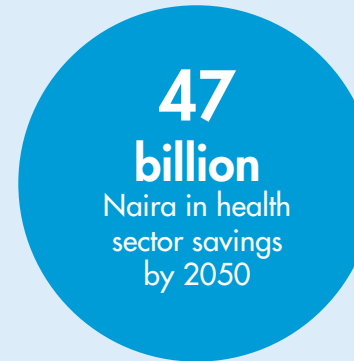
Photo by Joshua Jacobs/UNFPA

Over the course of her life, each woman in Adamawa State has nearly six children. The state's population continues to grow rapidly, and with less than five percent of married women using any method of family planning, it is unlikely that the population growth rate will slow. In this scenario, the large population will continue to hinder the state's development progress. However, Adamawa is in a position to influence its prospects by strengthening its commitment to family planning state-wide.

Smaller family sizes through increased use of family planning would relieve pressure on the provision of primary education and public health services and alleviate food insecurity as well unemployment and underemployment.



With fewer students, less money is needed for education



With a smaller population, less pressure is placed on the health system

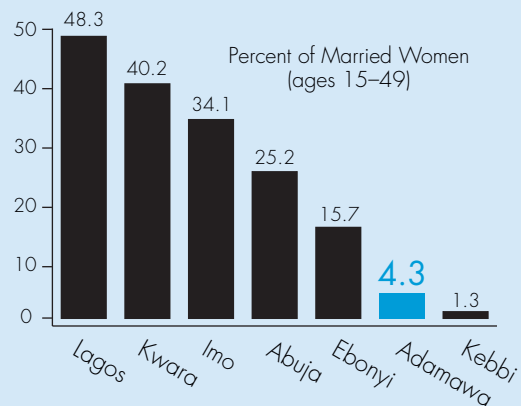


With smaller families and more job security, individuals can enjoy higher incomes

CURRENTLY IN ADAWAMA...

Only 4.3 percent of married women use any method of contraception. Because use of family planning is low, family sizes are large, driving rapid population growth.

Family Planning Use by State



WHAT CAN BE DONE

For Adamawa State to achieve its development potential, investments in family planning must become a priority:

- Develop and implement a state-level family planning/population strategy, as well as an accompanying costed implementation plan
- Commit resources for state-level family planning commodity storage and distribution to ensure universal access in both urban and rural areas
- Expand the supply of state-sponsored family planning providers, thereby enhancing access to services at the community level and in rural areas
- Reach citizens with family planning messages and education, thereby dispelling myths and misconceptions and promoting strong reproductive outcomes

References:

National Population Commission (NPC) and ICF International. 2014. *Nigeria Demographic and Health Survey 2013*. Abuja, Nigeria and Rockville, MD: NPC and ICF International.
RAPID Model for Adamawa State, 2014.